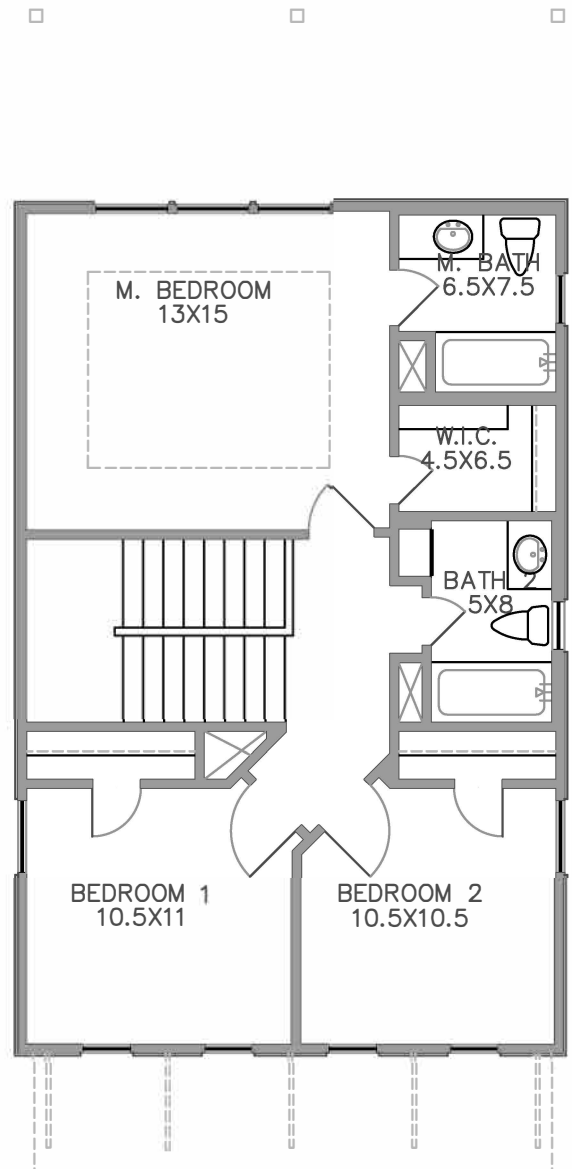
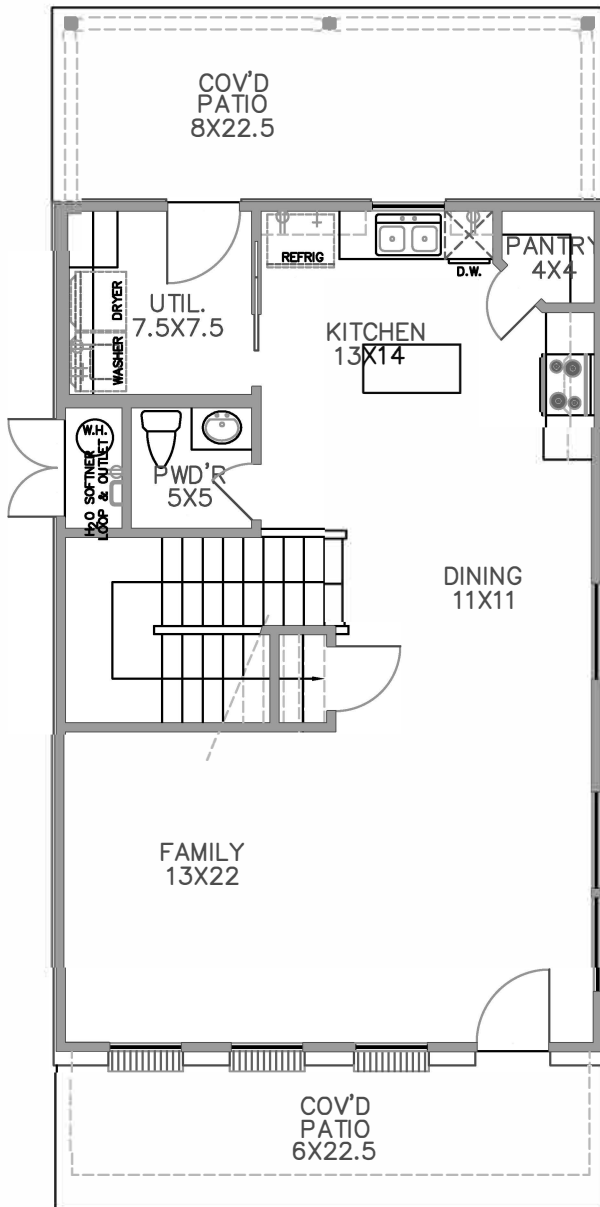
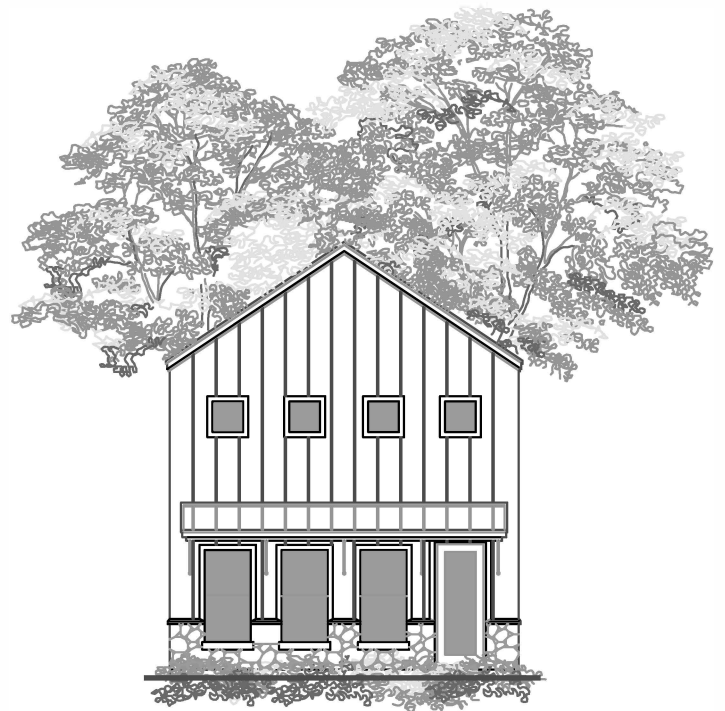




**PLAN 1550**

**3 BED / 2.5 BATH 1,551 SQ. FT.**

**MATT HARPER - 512.948.1739**





## 205 N. PATTERSON AVENUE FEATURES

- 3 Bedrooms
- 2 1/2 Baths
- Powder bath downstairs
- 1,551 sq. ft.
- Open kitchen / living area
- 9 ft. ceilings throughout
- Pop-up ceiling in Master
- Granite countertops
- Custom cabinets
- Stainless Steel appliance package
- Kitchen island
- Storage area under stairs
- Vinyl double pane low E windows
- Covered back porch
- 14 SEER HVAC
- Commercial opportunity

<b>School District:</b>	<b>Florence ISD</b>
<b>Electric:</b>	<b>TXU Energy</b>
<b>Water:</b>	<b>City of Florence</b>
<b>Sewer:</b>	<b>City of Florence</b>
<b>Cable / Internet:</b>	<b>Time Warner / Spectrum</b>

**MAKE THIS YOUR NEXT HOME TODAY! – 512.948.1739**